

# 9<sup>TH</sup> GRADE: THE BEGINNING OF THE JOURNEY



# **DISCUSSION POINTS**

- **Graduation and Testing Requirements**
- **Summer School Information**
- **Credit Recovery**
- **Maxwell and Grayson Tech**
- **Registration**
- **HOPE Scholarship**
- **GaFutures.org**
- **PSAT**
- **ACT and SAT (College Entrance Exams)**



# AREAS OF STUDY



- English/Language Arts
- Mathematics
- Science
- Social Studies
- Technical/Fine Arts and/or Foreign Language Classes
- Health and Physical Education
- Electives

## Units Required

4

4

4

3

3

1

4

**TOTAL UNITS (Minimum)**

**23**

# LANGUAGE ARTS

**4 units of English/Language Arts  
required including:**

**9<sup>th</sup> Grade Literature and Composition**

**10<sup>th</sup> Grade- World Lit and Comp**

**11<sup>th</sup> Grade – American Lit and Comp, AP Lang**

**12<sup>th</sup> Grade – British Lit and Comp, AP Lang, AP Lit  
Media Lit.**





# MATHEMATICS

## Option 1

- Algebra I
- Geometry
- Algebra II
- Precalculus or AMDM

## Option 2

- Geometry
- Algebra II
- Precalculus, Accelerated Precalculus, or AMDM
- AP Statistics or AP Calculus

## Accelerated

- Accelerated Geometry
- Accelerated Precalculus
- AP Calculus AB/BC or AP Statistics, or GT Dual Enrollment





# SCIENCE

**4 units of Science required, including:**

- **1 unit of Biology**
- **1 unit of Chemistry**
- **1 unit of Physics**
- **1 unit of a 4<sup>th</sup> science, including any AP Science Electives, academic science such as Anatomy and Physiology, Astronomy, Environmental, Oceanography, Forensics, Microbiology, or career tech science (ex.: Food Science, AP Computer Science, Engineering Apps/Concepts)**

# SOCIAL STUDIES

**3 units of Social Studies required,  
including:**

- **1 unit of World History**
- **1 unit of US History**
- **.5 unit of American Gov/Civ**
- **.5 unit of Economics**

**AP European History cannot be substituted  
for any of required SS classes.**



# HEALTH/PHYSICAL EDUCATION

**.5 Unit of Health**

**.5 Unit of Intro to  
Lifetime Fitness**

**Students cannot register for any  
other PE including weight training until  
completing Intro to Lifetime Fitness.**



# ELECTIVES

**3 units required (in any combination):**

**Career/Technology**

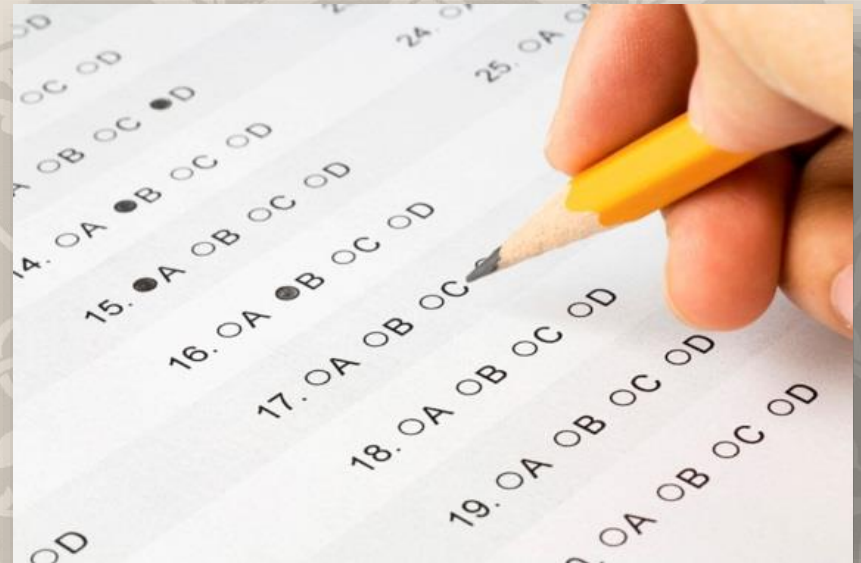
**Foreign Language**

**Fine Arts**

- ✓ **2 units of credit in the same Foreign Language are required for university admission in the state of Georgia and most other states as well. *This includes computer science course work and game design.***
- ✓ **4 additional units of electives are required from any area**
- ✓ **Students have the opportunity to complete a pathway in CTAE**

# REQUIRED TESTING FOR GRADUATION

- State required **Milestones** in
  - Algebra I
  - Biology,
  - 11<sup>th</sup> American Lit
  - U.S. History
- Gateway Exams in Social Studies and Science – Science 10<sup>th</sup> grade, Social studies in 11<sup>th</sup> grade.





# AP (ADVANCED PLACEMENT) INFO



- MC offers 25+ AP classes
- Students taking an AP class will be awarded 10 extra points on their final grade listed on transcript.
- HOPE/Zell Miller Scholarship does NOT include the 10 points, but will award an extra .5 towards GPA
- Teachers recommend AP classes during registration. AP Courses are a year long commitment
- GPA on transcript is weighted: AP Classes can earn 5.00 for a natural A which would put the numerical grade above a 100.

# PROMOTION REQUIREMENTS

- 10TH GRADE - 5 UNITS
- 11TH GRADE - 11 UNITS
- 12TH GRADE - 17 UNITS
- 23 Units needed for graduation





# SUMMER SCHOOL INFO

- Usually mid June 8 – June 30
- Cost: approx. \$250.00 per class
- 3 Locations – TBA
- Online courses are also available through Gwinnett Online Campus
- Registration and payment made online through your [mypaymentsplus.com](https://mypaymentsplus.com) account

# CREDIT RECOVERY

- Students who earn a 50-69 in a course qualify for credit recovery
- Offered each month in spring. Week long commitment. Must stay after school Monday-Thursday 2:30-4:30
- Credit recovery is offered for most core academic class
- Register through [MyPaymentsPlus.com](https://MyPaymentsPlus.com) Cost is \$40
- Students will receive remediation in each unit and will then be required to take the test for each unit. At the end of the credit recovery course the student will also take the performance final and final. The unit exams, performance final, and final exam will be used to determine a students final grade in credit recovery.
- Students taking Milestone courses are required to retake the Milestone.
- **NCAA does not accept credit recovery!**



# SCHOOL PLUS

- Students who earn below a 50 or have never attempted the course qualify
- Attendance is Mandatory 2:30pm-4:30 pm Mon-Thr for one month (except on digital days).
- School Plus is offered for most core academic class
- School Plus: Feb 28- March 21 Cost \$100 per half unit.
- Register through [MyPaymentsPlus.com](http://MyPaymentsPlus.com)
- If you have additional questions please contact Adam Smith  
[Adam.Smith@gcpsk12.org](mailto:Adam.Smith@gcpsk12.org)
- **NCAA does accept School Plus**

# MAXWELL HIGH SCHOOL 11<sup>TH</sup>/12<sup>TH</sup>

Animation and Digital Media		Culinary Arts		Manufacturing	
Introduction to Digital Media (1.0)	48.4210001/2	Introduction to Culinary Arts (1.0)	20.5310001/2	Foundations of Manufacturing & Materials Science (1.0)	21.4410001/2
Principles and Concepts of Animation (1.0)	48.4220001/2	Culinary Arts I (1.0)	20.5321001/2	Robotics and Automated Systems (1.0)	21.4450001/2
Advanced Animation, Game and APP Design (1.0)	48.4230001/2	Culinary Arts II (1.0)	20.5331001/2	Production Enterprises (1.0)	21.4440001/2
AP Computer Science Principles (1.0)	11.0190001/2	Food Science (1.0)	20.4181001/2	Advanced AC/DC Circuits (1.0)	21.4530001/2
Architectural Drawing & Design		Early Childhood Care and Education I		Personal Care Services (Cosmetology)	
Introduction to Drafting & Design (1.0)	48.5410001/2	Early Childhood Education I (1.0)	20.5281001/2	Introduction to Personal Care Services (1.0)	12.5440001/2
Architectural Drawing & Design I (1.0)	48.5450001/2	Early Childhood Education II (1.0)	20.4240001/2	Cosmetology Services II (1.0)	12.4100001/2
Architectural Drawing & Design II (1.0)	48.5460001/2	Early Childhood Education Practicum (1.0)	20.4260001/2	Cosmetology Services III (1.0)	12.4110001/2
Advanced Composition (1.0)	23.0340001/2	Food for Life (1.0)	20.4140001/2	Human Anatomy & Physiology (1.0)	26.0730001/2
General Automotive Technology		Electronics		Therapeutic Services (Allied Health and Medicine)	
Automotive Technologies 1 (1.0)	47.4500001/2	Foundations of Electronics (1.0)	21.4520001/2	Introduction to Healthcare Science (1.0)	25.5210001/2
Automotive Technologies 2 (1.0)	47.4510001/2	Advanced AC/DC Circuits (1.0)	21.4530001/2	Essentials of Healthcare (1.0)	25.4400001/2
Automotive Technologies 3 (1.0)	47.4520001/2	Digital Electronics (1.0)	21.4540001/2	Allied Health & Medicine (1.0) or	25.4370001/2
Energy & Power Technology (1.0)	21.4510001/2			*Human Anatomy & Physiology (1.0)	26.0730001/2
Advanced Automotive Technology (2nd year Teacher Recommendation ONLY)		Fire & Emergency Services/Firefighting		Therapeutic Services (Emergency Medical Responder)	
Advanced Automotive Technologies 4 (1.0)	47.4440001/2	Introduction to Law, Public Safety, Corrections, & Security (1.0)	43.4500001/2	Introduction to Healthcare Science (1.0)	25.5210001/2
Advanced Automotive Technologies 5 (1.0)	47.4450001/2	Essentials of Fire and Emergency Services (1.0)	43.4600001/2	Essentials of Healthcare (1.0)	25.4400001/2
Advanced Automotive Technologies 6 (1.0)	47.4460001/2	Applications of Firefighting (1.0)	43.4400001/2	Emergency Medical Responder (1.0) or	25.4500001/2
Mathematics of Industry and Government (1.0)	27.0860001/2	Mathematics of Industry and Government (1.0)	27.0860001/2	*Human Anatomy & Physiology (1.0)	26.0730001/2
Carpentry		Flight Operations		Welding	
Industry Fundamentals & Occupational Safety (1.0)	46.5450001/2	Fundamentals of Aerospace (1.0)	47.4600001/2	Industry Fundamentals & Occupational Safety (1.0)	46.5450001/2
Introduction to Construction (1.0)	46.5460001/2	Flight Operations I (1.0)	47.4880001/2	Introduction to Metals (1.0)	48.5810001/2
Carpentry I (1.0)	46.5500001/2	Flight Operations II (1.0)	47.4890001/2	Welding I (1.0)	48.5510001/2
Mathematics of Industry and Government (1.0)	27.0860001/2	Meteorology (1.0)	40.0410001/2	Mathematics of Industry & Government (1.0)	27.0860001/2
Collision Repair I		Graphic Design		*State Board of Education Rule 160-5-1-.15 "...students who earn one unit of credit for [Essentials of Healthcare 25.44000] shall also receive one unit of [elective science] credit for Human Anatomy and Physiology..."	
Painting & Refinishing					
Introduction to Collision Repair (1.0)	47.5650001/2	Introduction to Graphics & Design (1.0)	48.5610001/2	Course names/numbers are deemed to be accurate at the time this information was last updated. Information is subject to change in accordance with GADOE/BOR decisions.	
Painting & Refinishing I (1.0)	47.5660001/2	Graphics Design & Production (1.0)	48.5620001/2		
Painting & Refinishing II (1.0)	47.5670001/2	Advanced Graphic Design (1.0)	48.5280001/2	Maxwell High School 2021-2022 School Year Last update 11/19/2020	
Mathematics of Industry and Government (1.0)	27.0860001/2	Advanced Composition (1.0)	23.0340001/2		
Collision Repair II/Non Structural Analysis & Damage Repair (2nd year Teacher Recommendation ONLY)		HVACR (Heating, Ventilation, Air Conditioning & Refrigeration)		Science credit approved by BOR Language credit approved by BOR Math credit approved by BOR Elective Science Credit	
Non-Structural Analysis & Damage Repair I (1.0)	47.5680001/2	Industry Fundamentals & Occupational Safety (1.0)	46.5450001/2		
Non-Structural Analysis & Damage Repair II (1.0)	47.5690001/2	Introduction to HVACR (1.0)	47.4140001/2		
		Heating, Ventilation, Air Conditioning & Refrigeration (1.0)	47.4150001/2		
		Mathematics of Industry and Government (1.0)	27.0860001/2		
		Law Enforcement Services (Forensic Science)			
		Introduction to Law, Public Safety, Corrections, & Security (1.0)	43.4500001/2		
		Criminal Justice Essentials (1.0)	43.4510001/2		
		Forensic Science & Criminal Investigations (1.0)	43.4520001/2		

# GRAYSON HIGH SCHOOL 11<sup>TH</sup>/12<sup>TH</sup>

## Culinary Arts

Introduction to Culinary Arts 20.5310001

Culinary Arts I 20.5321001,2

Culinary Arts II 20.5331002

**Food Science 20.4181001,2\***

## Cybersecurity+

Introduction to Digital Technology 11.4150001+

Introduction to Cybersecurity 11.4810001,2

Advanced Cybersecurity 11.4820002

**Advanced Composition 23.0340001,2\*\***

## Entrepreneurship

Introduction to Business & Technology 07.4413002+

Legal Environment of Business 06.4150001,2+

Entrepreneurship 06.4161001

**Advanced Composition 23.0340001,2\*\***

## Exercise Physiology

Introduction to Healthcare Science 25.5210001

**Essentials of Healthcare 25.4400002\***

**Human Anatomy & Physiology 26.0730002\*\*\***

Fundamentals of Exercise Physiology 25.4540001,2

## Graphic Design

Introduction to Graphics and Design 48.5610001

Graphic Design and Production 48.5620001,2

Advanced Graphic Design 48.5280002

**Advanced Composition 23.0340001,2\*\***

## Information Support Services & Game Design

Introduction to Digital Technology 11.4150001+

Information Technology Essentials 11.4140001,2

Information Technology Support 11.4200002

**Game Design: Animation & Simulation 11.4290001,2\***

## Law & Justice

Intro to Law, Public Safety, Corrections, & Security  
43.4500001+

Criminal Justice Essentials 43.4510002+

Forensic Science and Criminal Investigations  
43.4520001,2

**Advanced Composition 23.0340001,2\*\***

## Music Technology

Intermediate Music Technology 53.0222001

Advanced Music Technology 53.0223001,2

Mastery Music Technology 53.0228002

**Advanced Composition 23.0340001,2\*\***

## Photography

Photography II 50.0712001

Photography III 50.0713001,2

Photography IV 50.0714002

**Advanced Composition 23.0340001,2\*\***

## Sports Medicine

Introduction to Healthcare Science 25.5210001,2

**Essentials of Healthcare 25.4400001,2\***

**Human Anatomy & Physiology 26.0730002\*\*\***

**Sports Medicine 25.4460001,2\***

## Veterinary Science

Basic Agricultural Science 02.4710001,2

Veterinary Science 02.4240001,2

Small Animal Care 02.4230001,2

**Animal Science and Biotechnology 02.4210001,2\***

## Video Production

Audio/Video/Technology & Film I 10.5181001

Audio/Video/Technology & Film II 10.5191001,2

Audio/Video/Technology & Film III 10.5201002

**Advanced Composition 23.0340001,2\*\***



# REGISTRATION



## **2022 - 2023 MILL CREEK HIGH SCHOOL REGISTRATION**



JANUARY 24, 2022: STUDENTS AND PARENTS BEGIN TO EXPLORE THE ELECTIVE & AP COURSE OFFERINGS AND THE REGISTRATION TIMELINE.

JANUARY 31, 2022: STUDENTS REVIEW HOW TO COMPLETE THE REGISTRATION FORM

FEBRUARY 1, 2022: REGISTRATION BEGINS

FEBRUARY 3, 2022: REGISTRATION ENDS

MARCH 15, 2022: DUAL ENROLLMENT PAPERWORK DUE



APRIL 15, 2022: DROP/ADD BEGINS

MAY 27, 2022: DROP/ADD ENDS



# POSTSECONDARY PLANNING



# PSAT

- Practice SAT (College Entrance Exam)
- Students will take the PSAT in October of their Sophomore year at no cost.
- Any student planning to take the PSAT their junior year must register and pay for the test through [mypaymentsplus.com](http://mypaymentsplus.com) account. (National Merit Scholarship)
- SAT Prep – [www.khanacademy.org/sat](http://www.khanacademy.org/sat)  
[Collegeboard.org](http://Collegeboard.org)



# SAT OR ACT ... WHICH ONE?

## SAT

- 1600 Perfect score
- No penalty for wrong answers
- Heavier emphasis on math, includes
- Pre-calculus and Trig
- Optional Writing section
- Optional subject area tests available

## ACT

- 36 Perfect Score
- No penalty for wrong answers
- Less emphasis on math, more Geometry
- Includes a Science section
- Four Sections
- Optional Writing section

# SAT OR ACT ... WHICH ONE?

**Both are accepted by most colleges**

**They cost about the same**

**Each takes about 4 hours to complete**

**Results in 4-6 weeks**

**MCHS is a testing site for both**



**\*Technical Colleges accept ACCUPLACER Exam**

**Register and take ACCUPLACER through your local technical college (e.g. Gwinnett Tech)**



# THE SAT **VS** THE ACT

- Fewer Geometry Questions
- More Time per Question
- No-calculator Math Section

## KEY Differences

- Lots of Geometry
- Faster Paced
- Tough Science Section



Overall Time

### TIMING & SCORING

Overall Time



Reading

65m

Writing

35m

200 - 800 points

Math  
(No Calculator)

25m

Math  
(Calculator)

55m

200 - 800 points

Total Points

400 - 1600

Time per Question

75s

Reading

48s

Writing

83s

Math

1-36

1-36

1-36

1-36

35m

Reading

45m

English

60m

Math

35m

Science

1 - 36

Total Points

Time per Question

53s

Reading

36s

English

60s

Math





# HOPE SCHOLARSHIP

- HOPE eligibility determined by GA Student Finance Commission (GSFC)
- All academic credits counted in HOPE calculation
  - AP courses – removal of 10 points (earn half a GPA point back)
- Standard for Eligibility:
- HOPE SCHOLARSHIP
  - 3.0 on a 4.0 scale = ~85% Tuition at Public School or
  - \$2,152 per sem. at a Private School

## Zell Miller SCHOLARSHIP

- 3.7 GPA & SAT 1200 in one sitting or 26 ACT = 100% Tuition at a Public School or \$2,808 per semester at a Private School

# WHAT IS MY HOPE AVERAGE?

**Visit [gafutures.org](http://gafutures.org)**

- **Look for “YOUR HOPE GPA” on the homepage under SHORTCUTS on the right hand side – follow the steps**
- **HOPE GPAs are updated after every semester**
- **Social Security Number is necessary to get information**
- **See your student’s counselor for assistance if needed**

# Hope Scholarship Rigor Requirements

**Minimum of 4 full credits from any of the below categories**

Credits received for academic rigor courses must be selected from the categories below:

1. Advanced math, such as advanced algebra and trigonometry, math III, taken at the high school, or an equivalent or higher course taken for degree level credit at an Eligible Postsecondary Institution;
2. Advanced science, such as chemistry, physics, biology II, taken at the high school, or an equivalent or higher course taken for degree level credit at an Eligible Postsecondary Institution;
3. Foreign language courses taken at the high school, or taken for degree level credit at an Eligible Postsecondary Institution; or
4. Advanced Placement, International Baccalaureate or Dual Credit Enrollment courses in Core subjects.



# GA FUTURES HOMEPAGE

**GAfutures**  
Explore. Plan. Succeed.

**GAfutures**  
Explore. Plan. Succeed.



HOPE & State Aid Programs

Federal Aid & Scholarships

College Planning

Career Exploration

Resources

About Us

My GAfutures

## Update Your Account in 2022!

Your preliminary HOPE GPA is just one of the many challenges for students in the New Year. Be ready by updating your GAfutures account.

[Learn more](#)

### Trending

### Shortcuts

🌟 Informational Webinars 🌟

◆ New Features for Student/General Users

◆ New Features for Administrative Users

2021-2022 Award Amounts

Your HOPE GPA

GAfutures on YouTube

Dual Enrollment Funding Application



### GSFC Financial Aid Events

Search for Financial Aid Events throughout the state of Georgia.



### College Search

Search Colleges and Universities in the state of Georgia and across the country.



### Scholarship Search

Use this tool to find eligible national and local scholarships.



### Quick Pay

Click here to make a payment  
GSFA (Pathways)

**Need to  
Chat?**

# **GAFUTURES.ORG OFFERS ...**

- **AN ONLINE PERSONAL PORTFOLIO**
- **COLLEGE/CAREER ASSESSMENTS**
- **COMPREHENSIVE COLLEGE PLANNING INFO**
- **ONLINE APPLICATIONS FOR COLLEGES**
- **HOPE INFO AND APPLICATIONS**
- **FINANCIAL AID RESOURCES**

# CAREER EXPLORATION

## CAREER EXPLORATION



### Learn About Yourself

Take assessments which will use your interests and skills to assist in finding potential careers.



### Career Exploration

Learn and understand more about many potential career areas to help make important decisions about potential occupations.



### Georgia's Career Clusters and Pathways

Georgia's Career Clusters allow students to choose an area of interest from 17 clusters. Utilize Georgia Department of Education resources as a guide to research career options.



### Learn About Skilled Trades

Great careers don't have to begin with a four-year degree. Find out more about skilled trade careers.



### Military to Civilian Job Search


You have served your country, now let us help you find a career. Use the skills you learned in the military to aid in finding your post-military career.





# LEARN ABOUT YOURSELF

## Career Assessments

 [My Next Move](#) and [CareerOneStop](#) are career exploration sites with interactive tools to help students of all ages research possible career options. Through various evaluations, you can learn more about yourself, your interests, skills and work values. Use the results to find career options that match your abilities.

## Interest Profiler

My Next Move's [Interest Profiler](#) can help you figure out what you like to do and how you can use that information when thinking about your career. You can take the Interest Profiler multiple times and see how your score may differ from your freshman year to your senior year in high school.

Use Interest Profiler to find out what program of study or level of education is needed for your potential career. Then go to the [Map of Georgia Colleges](#) and find one that can help get you on the path to success.



My Next Move is sponsored by the [U.S. Department of Labor](#).

## Skills Profiler

[CareerOneStop's Skills Profiler](#) shows how your skills relate to a potential career. You can also view the skills necessary for a current or future job.



# COLLEGE PLANNING

**Apply to  
Georgia  
Colleges  
through  
GaFutures.org**

**Send transcripts  
to Georgia  
Colleges  
for free!**

## COLLEGE PLANNING



### College Decision Guide

Deciding what to do after high school can be a stressful decision. Use some of these facts to guide your decisions.



### State of Georgia Colleges

Find colleges and universities in Georgia that are eligible for state aid (HOPE Scholarship, Zell Miller Scholarship, HOPE Grant, etc.)



### National College Search

Search for colleges by different attributes such as public/private, size of school, or even by programs offered from all over the country.



### College Applications

Once you've decided on your top picks, you can start applying to participating colleges and universities right here.



### High School Transcripts

Create an online request to have your high school transcript sent to the postsecondary destination of your choice through your My GAfutures account.



### GATRACS

The goal of the Georgia Transfer Articulation Cooperative Services (GATRACS) is making college transfers easy. Learn about transfer opportunities and compare degree programs.



### Path2College 529 Plan

Start a college savings plan today and give your child, a loved one or yourself the gift of a college education.



# FEDERAL AID & SCHOLARSHIPS

## FEDERAL AID & SCHOLARSHIPS



### Financial Aid Basics

Financial aid is money from various sources to help students pay for college. View some of the basics.



### FAFSA

The Free Application for Federal Student Aid (FAFSA) determines eligibility for all federal financial aid programs and must be completed each year when applying for financial aid.



### Federal Student Loans

Take a look at the various types of loans available through Federal Student Aid and the repayment options.



### Federal Student Grants

Learn about the federal grant programs available to assist with students paying for college or career school.



### Scholarship Search

There's more money for your postsecondary education than you think. Use this tool to find what scholarships you may be eligible for.







# **SUPPORTING YOUR HIGH SCHOOLER**

Mill Creek High School  
Freshmen Parent Luncheon

## AGENDA

**1**

**EXPECTATIONS &  
ENCOURAGEMENT**

**2**

**HOME LEARNING  
ENVIRONMENT**

**3**

**SCHOOL-HOME  
COMMUNICATION**



**1**

**EXPECTATIONS &  
ENCOURAGEMENT**



# YOUR EXPECTATIONS & ASPIRATIONS MATTER

## TOO LOW?

High, realistic academic expectations can have the largest positive effect on your child's academic performance.

## TOO HIGH?

Unrealistically high aspirations can be detrimental to your child's achievement.

# DEFINING YOUR EXPECTATIONS & ASPIRATIONS

## RESULTS

- Class rank
- GPA
- College acceptance
- Scholarships
- Awards
- Internships
- Careers

## BEHAVIORS & MINDSETS

- Persistence
- Resilience
- Self-efficacy
- Courage
- Study habits
- Goal setting
- Self-advocacy
- Independence
- Self-motivation
- Work-life balance
- Self-worth
- Integrity

# WHAT DOES YOUR CHILD EXPECT?

## Open Questions

- Questions that can't be answered with a "yes" or "no"
- Questions that start with who, what, where, when, how
- Statements like, "Tell me more"

## Reflect

- Hear what your child is really saying
- Say it back to them without judgement
- Use instead of a question

## Encourage

- Notice strengths, efforts, & growth
- Encouragement vs praise



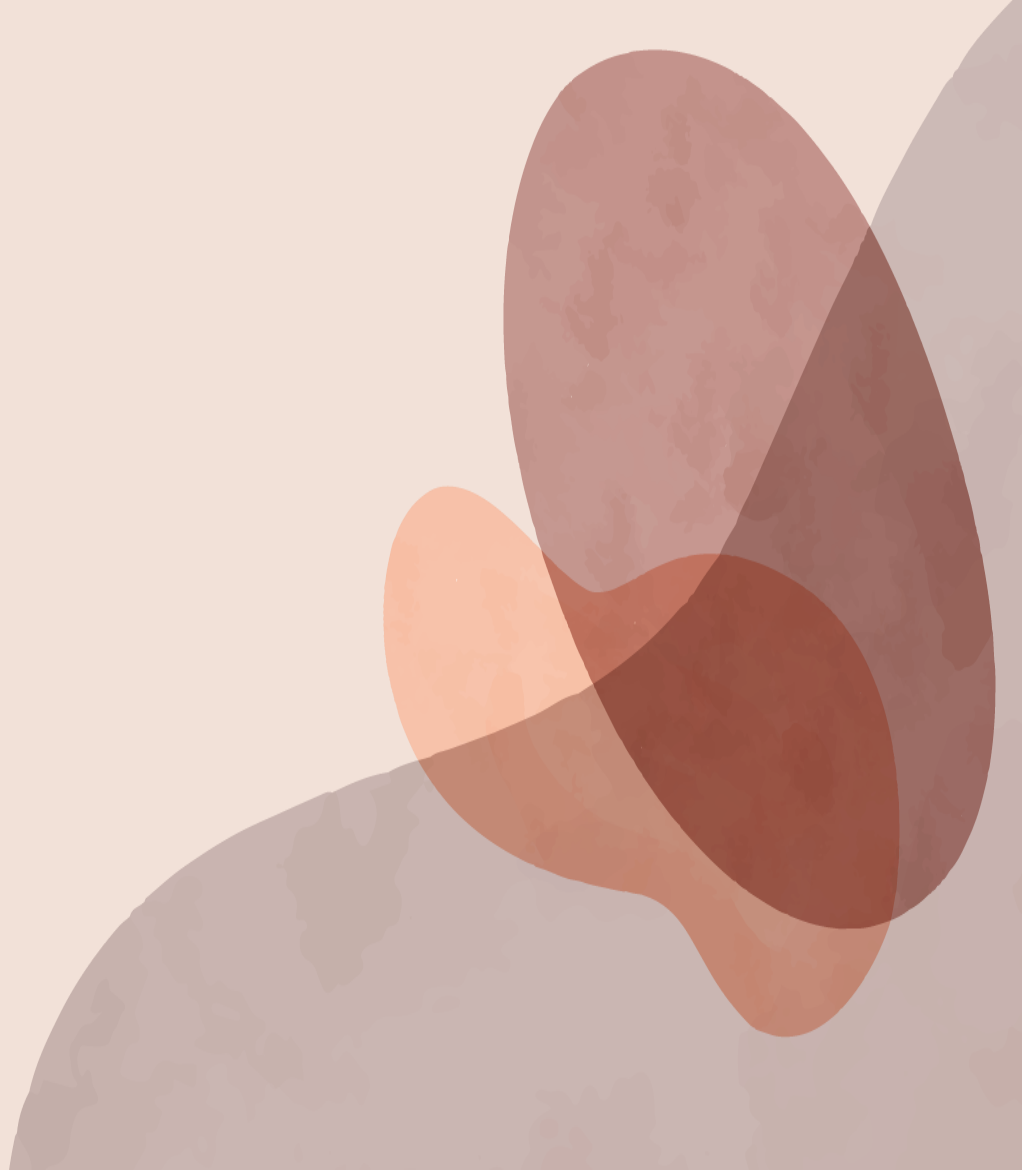


2

**CREATING A LEARNING  
ENVIRONMENT  
AT HOME**

# CREATING A LEARNING ENVIRONMENT AT HOME

1. Physical study space
2. Daily structure
3. Course organization



## LEARNING ENVIRONMENT: Tips

1. Start with the **conversation** about your expectations & your child's aspirations; your learning environment choices should serve those goals
2. Allow **choice and personalization** wherever possible; create the study space and schedule with your child
3. Start **small**
4. Get **creative**
5. Embrace **trial & error**
6. There's no "perfect" study space, schedule, or organization strategy; just find **what works best** for your home, lifestyle, & child



## PHYSICAL STUDY SPACE: Considerations

1. What is your child's current level of academic motivation and independence?
  2. How does your child respond to a lively environment?
  3. How are your child's energy levels?
  4. How consistently can your child focus on homework?
  5. Does your child need access to a computer?
  6. Does your child prefer to work on paper?
1. Supervised vs Alone
  2. Background Noise/Activity vs Quiet/Focused
  3. Sitting vs Standing
  4. Do they need fidgets, access to a visible timer, an exercise ball as a chair, or a stretch band on the legs of their chair?
  5. Outlets, Internet strength
  6. Agenda, notebooks, pencils, note cards, white board, storage

# PHYSICAL STUDY SPACE: Checklist

## Sturdy writing surface with space

- ☐ Desk, counter, kitchen table, lap desk

## Good chair

- ☐ Ergonomic, ball chair, bean bag

## Good lighting

- ☐ Natural light, overhead, lamp

## Limit distractions

- ☐ Phone, TV, siblings, headphones, room divider

## Access to materials

- ☐ Computer, notebooks, pencils, notecards

## Access to organization tools

- ☐ Agenda, calendar, white/bulletin board, multicolored pens

## Storage

- ☐ Baskets, backpack hook, shelves, drawers, folders, binders

## Decorations & Aesthetics

- ☐ Photos, vision board, quotes, plants, color

## DAILY STRUCTURE: Considerations


1. How much time does your child need to complete their schoolwork?
2. What extracurricular commitments (job, clubs, sports) and home responsibilities (chores, sibling care) does your child have?
3. How much time does your child have between extracurriculars and responsibilities?
4. Does your child work better in small chunks or in long, uninterrupted intervals?
5. Are weekends available for studying?
6. Does your student ride the bus or have a long car ride?



## DAILY STRUCTURE: Tips

1. Start with that **conversation**; help your teen take ownership of their schedule and responsibility for their goals
2. Use tools like eClass to **set priorities**
3. **Consistency & flexibility**
4. Schedule **downtime**
5. Create a **visual schedule** (either physical or digital)
6. Gradually release **responsibility**
7. **Note:** A packed schedule might require doing some homework during pockets of downtime at school or on the go; your child might not always have the option to work in their study space. Your child might need help planning to study in chunks.

## COURSE ORGANIZATION: Tools

- eClass; "Week at a Glance"
  - Eisenhower Matrix
  - Digital or physical planners/agendas
  - White board
  - Binder(s) with dividers, notebooks, and folders for each class
  - Weekly backpack cleanout
  - Weekly family meeting
  - Collaborative family calendars & to-do lists
- 



3

# SCHOOL-HOME COMMUNICATION



# SCHOOL-HOME COMMUNICATION: **Prevention Tools**

1. eClass
2. Parent Portal & ParentVUE app
3. Remind app
4. Email
5. "Take Flight" newsletter
6. Mill Creek PTSA



## SCHOOL-HOME COMMUNICATION: **Intervention Tools**

1. Staff directory
2. Parent-teacher conferences
3. Teacher office hours
4. Teacher tutoring schedule



**IF YOU HAVE MORE QUESTIONS  
CALL US!!!**

• **Mill Creek Counseling  
Department - 678-714-5864**

• ***9<sup>th</sup> Grade Administrator***

• **Travis Techo**

**[Travis.Techo@gcpsk12.org](mailto:Travis.Techo@gcpsk12.org)**

Counselors are assigned students by  
their first initial of their last name.

**Counselors**

- Sam Cutler A-Cap
- Chris Burnette Car-Fo
- TJ Nelson Fox-Jan
- Camile Irving Jas-McC
- Jackie Hatcher McD-Pok
- Betsey McGuire Pol-Sti
- Jennifer Moore Sto-Z
- Kelley Griffin Dual Enrollment/EPIC
- Kelli Vanderpool College and Career



# ANY QUESTIONS?



# WE'RE HERE TO HELP!!